



Description

Gripset GC2 is an innovative heavy-duty sheet membrane system that provides high performance waterproof/vapour proof and decoupling properties for internal and external wet areas, roofing and specialised applications. Consisting of fibre bonded fabric on the exposed face and heavy-duty fibre backing on the rear face, GC2 forms a fast and highly durable waterproof system that allows surface toppings/finishes or Gripset trafficable coatings to be applied over immediately after the membrane system has been installed.

A unique feature of the GC2 system is the anti-fracture and decoupling properties to prevent stress cracks from transferring through to the finished surfaces over concrete, masonry and timber substrates.

Further details are available in the Gripset GC manual for a range of specifications and fixing details for waterproofing applications where this system can be used.

Features & Benefits

- * Provides an immediate waterproof finish upon completion, avoids delayed drying times
- * Fast and reliable sealing method. Reduces labour and application time of waterproofing by >50% over sheet and liquid systems
- * Enables the direct application of toppings, tiles, screeds, levellers and liquid membrane same day as waterproofing application
- * Resists surface cracks and provides an anti-fracture/decoupling system on floor substrates
- * Outstanding crack bridging properties
- * Suitable for internal, external and immersed applications
- * Durable, tear resistant and able to resist perforation
- * Can be applied over damp surfaces
- * Able to be finished over with a range of surface finishes
- * Compliant to AS4858:2004 and AS4654.1:2012 for use in internal and external applications

Application

Gripset GC-2 is suitable for commercial and residential applications.

Waterproofing Uses

- * Internal wet areas
- * External wet areas, podiums, terraces, & balconies to be tiled over
- * External wet areas to be finished over with pedestal pavers
- * Roofs, suspended external floors and box gutters when used with Gripset UV stable finishes applied over
- * Repair system over failed roof membrane products
- * Roof gardens, earth shelters (* refer fixing specification)
- * Planters and garden beds (* refer fixing specification)
- * Suspended pool floors, spas, water features and fish ponds
- * Decoupling/anti-fracture membrane system prior to tiles on concrete and timber flooring substrates

Substrates

Substrates suitable for the GC2 system include:

- * Concrete
- * Render, screeds and general masonry surfaces
- * Concrete blocks and clay brick
- * CFC, cement sheet, Hardies Scyon™, plaster board surfaces
- * Particleboard flooring (Structaflor etc)
- * Plasters and general mineral surfaces
- * Aerated concrete panels and blocks

For further information on suitable surfaces and substrates contact technical department of Gripset Industries for correct advice on surface preparation and suitability.

Surface Preparation

Surfaces must be prepared thoroughly before commencing application. All substrates must be structurally sound, smooth, stable, dry, and clean.

Rough surfaces and voids to be evened or filled first and all brick/block surfaces to be pointed flush. (refer to Gripset 11Y for concrete/masonry repairs). All general surface defects to be repaired.

Building surfaces must be constructed to manufacturer's recommendations and relevant building standards in force at time of membrane application.

All surfaces are to be free of sharp protruding objects, loose material, de-bonded coatings, curing membranes/agents, release agents, wax residues, foreign particles, laitance, algae and moss, grime, oils, animal fats or grease remains.

Structurally unsound layers and surface contaminants are to be mechanically removed by abrasive blasting, blast tracking, grinding or equivalent methods.

Priming

Priming over general surfaces is not required when using the recommended GC Adhesive. Surfaces can be sprayed with light water mist prior to adhesive application. Ensure surface is free of standing water.

For porous substrates with a surface prone to forming a surface dust after correctly preparing, e.g. fibre cement sheeting, aerated concrete or similar, surfaces should be primed with Gripset GP primer to seal any surface dust from compromising adhesion of the membrane.

- Porous substrates in external areas containing any residual moisture are to be primed against moisture vapours using either Gripset E60 or Gripset P10 primers before applying.

Note: Refer to data sheets for above primers before using

Detailing

All critical areas such as joints, junctions, movement zones, penetrations drainage points and cracks are to be correctly sealed and detailed prior to membrane application.

Voids, gaps and undulating surfaces in concrete/masonry	Filled and evened with Gripset 11Y repair mortar compound.
Static cracks <1mm:	N/A
Static cracks > 1mm:	Filled with Gripset SB
Live cracks and cracks >1mm:	Filled with Gripset SB followed by Elastoproof Joint Band
Bond Breaker:	Elastoproof Joint Band to wall/floor junctions and wall/wall junctions.
Movement or Expansion Joints:	Elastoproof Joint Band
Penetrations, Pipes, Floor wastes	Elastoproof Collars or Butyl Tape for penetrations, Butyl Squares for floor wastes

Membrane Application & Coverage:

Gripset GC2 is supplied in a 15m x 1m wide roll. When applied in lengths less than roll size, cut to measure dimensions needed for the application and re-roll the sheet in preparation for laying into adhesive bed. The GC2 is to be adhered on all floor areas to be waterproofed, abutting edges of the walls of these areas.

FIXING DETAILS - POROUS SUBSTRATES

Apply **Gripset GC Pro Adhesive** using a medium nap roller onto the surface, ensuring 100% coverage of adhesive to where the membrane is to be laid. Minimum wet film thickness of adhesive should be 1mm. Unroll the GC2 membrane into the wet bed of adhesive and using a flat steel float, smooth roller or similar, press the sheet into the adhesive to ensure a firm bond to the adhesive bed, removing any air pockets or excess adhesive.

NOTE: For use in dry areas as an anti-fracture system for tile underlay, overlaps are not required

Sheet overlaps

Sheet joints must be a minimum 50mm overlap. Once fixed, apply a liberal coat of GC Pro Adhesive or Gripset 38FC membrane over the lapped sheet joint to fully seal the lip of the overlapped section. (required for tiling screeding applications directly over GC2)

FIXING DETAILS - NON POROUS SUBSTRATES

All fixing details are the same except that the **Gripset GC All Purpose Adhesive** is to be used for fixing the GC2 to substrates. This adhesive is applied using a 2.4mm V notch toothed trowel onto the surface, ensure 100% coverage of adhesive to where the membrane is to be laid. Ensure a 50mm overlap between sheet laps and adhere using Gripset GC All Purpose Adhesive. Once adhered, neat GC Pro Adhesive or Gripset 38 FC membrane applied over the lapped sheet joint to fully seal the lip of the overlapped section.

With pipe penetrations, the GC2 membrane is to be cut to enable the sheet to slide over penetrations. This is best achieved by measuring the pipe diameter and in the position where the sheet will cover the pipe, a cross "+" should be cut that is the pipe diameter length and sliding this over the pipe. Adhere the GC2 sheet into the bed of adhesive and trim any of the loose membrane around the upturn of the pipe from the section where the cross "+" was formed ensuring the GC2 membrane is firmly bonded around the pipe.

For leak control flanges, overlay sheet over the flange and once fixed to the floor surface, cut around perimeter edges of the flange ensuring the edges of the GC2 sheet are well bonded to the floor substrate

Once the GC2 sheet has covered the floors, the Elastoproof system is to be adhered at wall/floor junctions as the bond breaker.

Adhesive Coverage

NOTE: Adhesive coverage is dependent upon surface condition and will vary accordingly as uneven surfaces will require greater coverage to achieve the required bed thickness

GC Pro Adhesive

General consumption of GC Pro Adhesive is approximately 1.2m² per litre applied with a medium nap roller

A 15 Litre pail of Gripset GC Pro Adhesive will cover approx. 18m² of area to adhere the GC2 sheet to the surface. Allow extra for sealing sheet laps and for installing the Elastoproof Bond Breaker System.

GC All Purpose Adhesive

Consumption of GC All Purpose Adhesive is approximately 1.2m² per kg applied with a 2.4mm notch tooth trowel.

A 16kg pail of GC All Purpose Adhesive will cover approximately 19m² of area to adhere the GC-1 sheet

Installing Elastoproof Bond Breaker System

Elastoproof Prefabricated Corners are available for both internal (90°) and external (270°) junctions, enabling Joint Band to overlap and avoid joints at critical areas. To install the Corners, notch the GC All-Purpose Adhesive to all internal/external corners extending up walls and onto floor sheet of the GC2 in line with the corner profile. Embed Prefabricated Corners into a wet bed of adhesive. Using a spatula or similar, press Corners into the Adhesive ensuring Corners are well bedded. Tool off adhesive to fully seal the lip of the Joint Band and GC2 sheet.

Measure and cut Elastoproof Joint Band for all wall/floor junction areas allowing for a minimum 50mm overlap onto corner sections. Notch the GC All-Purpose Adhesive to wall/floor junctions extending up walls and onto floor sheet of the GC2 in line with the Joint Band profile. Embed Joint Band into a wet bed of adhesive. Using a spatula or similar, press Joint Band into the Adhesive ensuring no air bubbles exist behind the fabric. Tool off adhesive to fully seal the lip of the Joint Band and GC2 sheet. At sections where Joint Band is to be joined, a minimum 50mm overlap is required.

For floor pipes protruding floors, Elastoproof Collars are to be fitted over the neck of the pipe bonding the collar to the GC2 membrane within a wet bed of GC All Purpose Adhesive. Once fixed seal edges of the collar to the GC2 sheet by tooling off GC All Purpose Adhesive. For leak control flanges, Elastoproof Butyl Squares are to be fitted directly over ensuring the interface between GC2 sheet and edge of flange is covered.

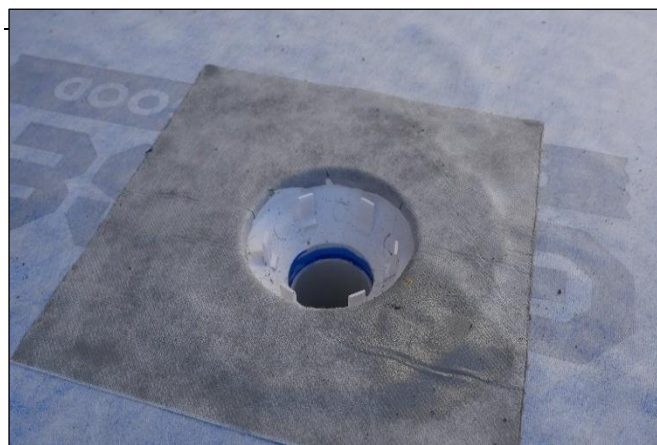
IMPORTANT: Suitable Gripset liquid membranes can be used as an alternative for fixing the Elastoproof bond breaker system and sealing overlaps based on the application for which the GC2 is to be used. For example, for under tile applications to external wet areas the Elastoproof bond breaker system can be fixed using the Gripset 38 FC Membrane. For immersed applications Gripset C-1P can be used. When using a liquid membrane, extend up perimeter walls and onto GC2 Membrane to 150mm and bed Joint Band and Corners into a wet coat of membrane. Once in place, brush the membrane over the face and onto all edges of the Joint Band adhering to the GC2 sheet, to fully seal the lip of the Joint Band and GC2 sheet.



Installing Elastoproof Prefabricated Corners



Installing Elastoproof B50 Bond Breaker Joint Band



Elastoproof Butyl Square over leak control flange

General

Refer to the GC product manual or any Gripset specification issued for specific applications. All other enquiries regarding this system are to be directed to Gripset Technical Services.

The full range of Gripset membranes is compatible with the GC2 sheet. For situations where any other of the Gripset membranes are to be applied over the GC2 sheet, apply after the fixing instructions above have been completed.

Tiling & Surface Toppings

Tiling or laying of screeds over the GC2 System can commence once the overlaps and Elastoproof bond breaker system is dried. This is usually 4 hours after the application is complete but may take longer in cooler conditions.

When screeding over the GC2 membrane, it is recommended to incorporate the Gripset 11Y additive into the screed to enhance adhesion to the substrate. Alternatively, Gripset C-Bed pre-bagged screed can be used directly onto the membrane. A proprietary acrylic or latex bonding additive is to be incorporated into general mortar beds that are applied onto the GC2 membrane. Sheet should be pre-dampened prior to any screeding or self levelling applications.

Tile adhesives or self-levelling compounds being directly fixed to the GC2 membrane are to be polymer modified. Pre-mixed adhesives and cement based compounds without any polymer enhancement are not to be used for direct adhesion to the membrane.

For use of other adhesives over the GC2 membrane system contact the technical department of Gripset Industries for details of compatibility.

Note: All tiling is to be carried out to AS3958.1 – 2007 "A Guide To The Installation of Ceramic Tiles"

Storage conditions

- * Best stored at room temperature in dry conditions, indoors.
- * Do not stack heavy items onto the membrane
- * Do not store in direct sunlight
- * Protect against mechanical damage

Packaging

- * Cardboard carton, consisting of 1 Roll: 15m x 1m
- * 28 cartons/pallet
- * GC All Purpose Adhesive: 16kg (10litre) pails
- * GC Pro Adhesive: 15Litre pails

Precautions

- * Not to be used as a trafficable surface or a long term exposed membrane surface. Must always be covered with suitable finishes.
- * To be adhered with recommended Gripset adhesives as specified in the data sheet.
- * Flood testing able to commence minimum 24 hours after finished application.
- * When pre-dampening surfaces, ensure surface is free of ponding water
- * Do not apply when surface temperature exceeds 35°C. Ensure surfaces are free of frost and ice.
- * Not to be used in areas where solvent or petroleum based products may be spilled.
- * All finish coatings over this membrane must be water based and solvent free.
- * Safety Data sheet (SDS) available.
- * For further information, contact Gripset Technical Department

Clean up

- * GC2 Sheet is non-hazardous substance.
- * May be disposed of as building site waste
- * GC All Purpose Adhesive to be removed mechanically or by solvent

TECHNICAL DATA

Weight	490g/m ²
Thickness	1.1mm
Tensile strength – lateral	>11 MPa
Tensile strength – longitudinal	>8 MPa
Rupture strain – lateral	>40%
Rupture strain – longitudinal	>36%
Water vapour transmission resistance coefficient μ	45000
Equivalent air thickness sd	90m
Water pressure resistance	3 bar
Fire class	B2, E
CHEMICAL RESISTANCE	
Lactic Acid	5%
Acetic Acid	5%
Hydrochloric Acid	3%
Potassium Hydroxide	20%
Sodium Hydroxide solution pH =	14

Notes

It is recommended before commencing the application; that adhesion of products to be used (e.g. primers, membranes, coatings adhesives etc) is tested over a typical area of the prepared surface to ensure satisfactory adhesion. It is the responsibility of the applicator to carry this out and accept the substrate suitability before any application starts. Gripset Industries offers a service for pre testing adhesion to surfaces for large commercial areas or unusual substrates. For further details contact Gripset Industries.

Details contained in product data sheets are general. For any situation or items not covered in this data sheet, it is the responsibility of the applicator to check with Gripset Technical Services before commencing the application. A written confirmation will then be issued by Gripset Technical Services.

Gripset Industries Pty Ltd

ABN: 64 137 930 093

Telephone: +61 (8) 8124-7300 or 1800 650 435

Email: techenquiries@gripset.comWebsite: www.gripset.com

Product Disclaimer

This Product Data Sheet (PDS) summarises our best knowledge of the product, including how to use and apply the product based on the information available at the time. You should read this PDS carefully and consider the information in the context of how the product will be used, including in conjunction with any other product and the type of surfaces to, and the manner in which, the product will be applied. Our responsibility for products sold is subject to our standard terms and conditions of sale. Gripset Industries does not accept any liability either directly or indirectly for any losses suffered in connection with the use or application of the product whether or not in accordance with any advice, specification, recommendation or information given by it.

Distributor Cyprus: M. A. Total Build Ltd

149 Arch. Makarios III Avenue, 3021 Limassol, Cyprus

Email: info@totalbuild.com.cy

Tel: +357 99 121841, Fax: +357 25 381403

